

## Red House® Slim Fit Pinpoint Oxford Non-Iron Shirt. RH620



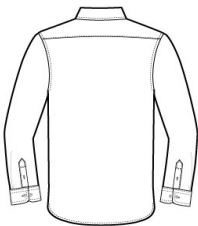
For those who prefer a slim (but not tight) fit that sits closer to the body. Crafted from 3.8-ounce, 100% cotton, this elegant pinpoint oxford has a wrinkle-resistant finish so you always look your best—no iron required. Details like pucker-free taped seams, rounded adjustable cuffs, RH engraved buttons and a shirttail hem complement the sharp look. Open collar with removable stays.

### CARE INSTRUCTIONS

Machine wash warm with like colors, only non-chlorine bleach if needed, tumble dry low, remove promptly & hang, warm iron if needed.

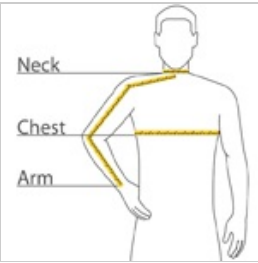


front



back

### HOW TO MEASURE



#### CHEST WIDTH

Measure under the arm and around the fullest part of the chest with arms down, keeping tape horizontal.

#### NECK

Measure around the fullest part of the neck at the base.

#### ARM

Place hand on hip. Start at the center of the back of the neck and measure across the shoulder, to the elbow, and then down to the wrist.

### SIZE CHART

	XS	S	M	L	XL	2XL
Chest	32-34	35-37	38-40	41-43	44-46	47-49
Neck	14 1/2 - 15	15 - 15 1/2	15 1/2 - 16	16 - 16 1/2	16 1/2 - 17	17 - 17 1/2
Arm	30 1/2	32	34	35	36 1/2	37 1/2

### COLOR INFORMATION



Blue  
PMS 2134C



Charcoal  
PMS COOL GREY  
11C



Vintage Navy  
PMS 2374C



White  
PMS WHITE