



With a beautiful two-color weave--not to mention wrinkle resistance--this poplin shirt has a pleasing texture and truly impresses in the office.

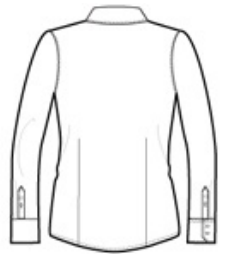
- 3-ounce, 60/40 cotton/poly
- Open collar and neckline
- Front and back darts
- Pearlized buttons
- Mitered two-button cuffs

CARE INSTRUCTIONS

MACHINE WASH COLD WITH LIKE COLORS, ONLY
NON-CHLORINE BLEACH, TUMBLE DRY LOW, WARM
IRON IF NEEDED

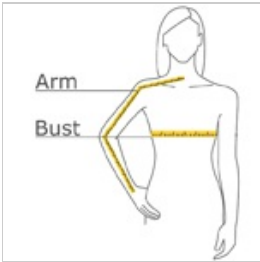


front



back

HOW TO MEASURE



BUST

Measure under the arm and around the fullest part of the bust with arms down, keeping tape horizontal.

ARM

Place hand on hip. Start at the center of the back of the neck and measure across the shoulder, to the elbow, and then down to the wrist.

SIZE CHART

| | XS | S | M | L | XL | XXL | 3XL | 4XL |
|------|-------------|-----------------|-------------|-------------|-------------|-------------|-----------------|-----------------|
| Size | 2 | 4/6 | 8/10 | 12/14 | 16/18 | 20/22 | 24/26 | 28/30 |
| Bust | 32-34 | 35-36 | 37-38 | 39-41 | 42-44 | 45-47 | 48-51 | 52-55 |
| Arm | 30 - 30 3/4 | 30 3/4 - 31 1/2 | 31 1/2 - 32 | 32 - 32 1/2 | 32 1/2 - 33 | 33 - 33 3/8 | 33 3/8 - 33 3/4 | 33 3/4 - 34 1/2 |

COLOR INFORMATION

| | | | | | |
|--|---|---|---|---|---|
|  |  |  |  |  |  |
| Chambray Blue PMS 3584C | Deep Blue PMS 2380C | Grape Harvest PMS 7665C | Navy Frost PMS 533C | Red Oxide PMS 7638C | Soft Black PMS NTR BLACK C |