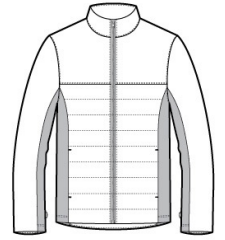


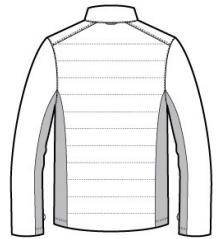


This jacket combines the warmth of low-bulk quilted insulation with flexible soft shell side panels for a trend-right, weather-resistant look.

- Can be zipped in and secured by snap attachments inside an outer Collective layer
- 100% polyester woven shell
- 100% polyester printed lining with 100% polyfill insulation behind the outer quilted woven shell
- 100% polyester knit bonded to a water-resistant film insert and a 100% polyester microfleece lining at side panels and under arms
- Slightly longer length
- Molded center front zipper
- Stretch side panels
- Open front pockets
- Port Pocket™ for easy embroidery access



front

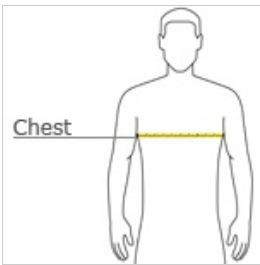


back

CARE INSTRUCTIONS

Machine wash cold with like colors; do not use fabric softener; tumble dry low; remove promptly; only non-chlorine bleach when needed; cool iron if necessary; do not dry clean.

HOW TO MEASURE






CHEST WIDTH
Measure under the arm and around the fullest part of the chest with arms down, keeping tape horizontal.

SIZE CHART

| | XS | S | M | L | XL | 2XL | 3XL | 4XL |
|-------|-------|-------|-------|-------|-------|-------|-------|-------|
| Chest | 32-34 | 35-37 | 38-40 | 41-43 | 44-46 | 47-49 | 50-53 | 54-57 |

COLOR INFORMATION

| | | |
|--|---|---|
|  |  |  |
| Deep Black PMS NTR BLACK | Graphite PMS 7540C | River Blue Navy C |